



figure: Media Side select triple doors left and right, centrally optional cabinet module out of three drawers each, with adjustable feet

Sideboard for motorised height-adjustable display

Basic construction: lifting columns: RAL 9016 Traffic white powder-coated
corpus: decors without extra costs (on p. 2)
door/drawers: decors without extra costs (on p. 2)

Cabinet: Media Side select twice – H 62,5 x W 123 x D 52 cm (with adjustable feet)
dimensions – H 76,5 x W 123 x D 52 cm (with castor rollers)
Media Side select triple – H 62,5 x W 182 x D 52 cm (with adjustable feet)
– H 76,5 x W 182 x D 52 cm (with castor rollers)
Media Side select fourfold – H 62,5 x W 242 x D 52 cm (with adjustable feet)
– H 76,5 x W 242 x D 52 cm (with castor rollers)

Vertical travel: approx. 50 cm

Load capacity: up to max. 130 kg (2 integrated motor lifting columns)

Mounting: mobile on 4 castor rollers (approx. 10 cm Ø), adjustable feet optional

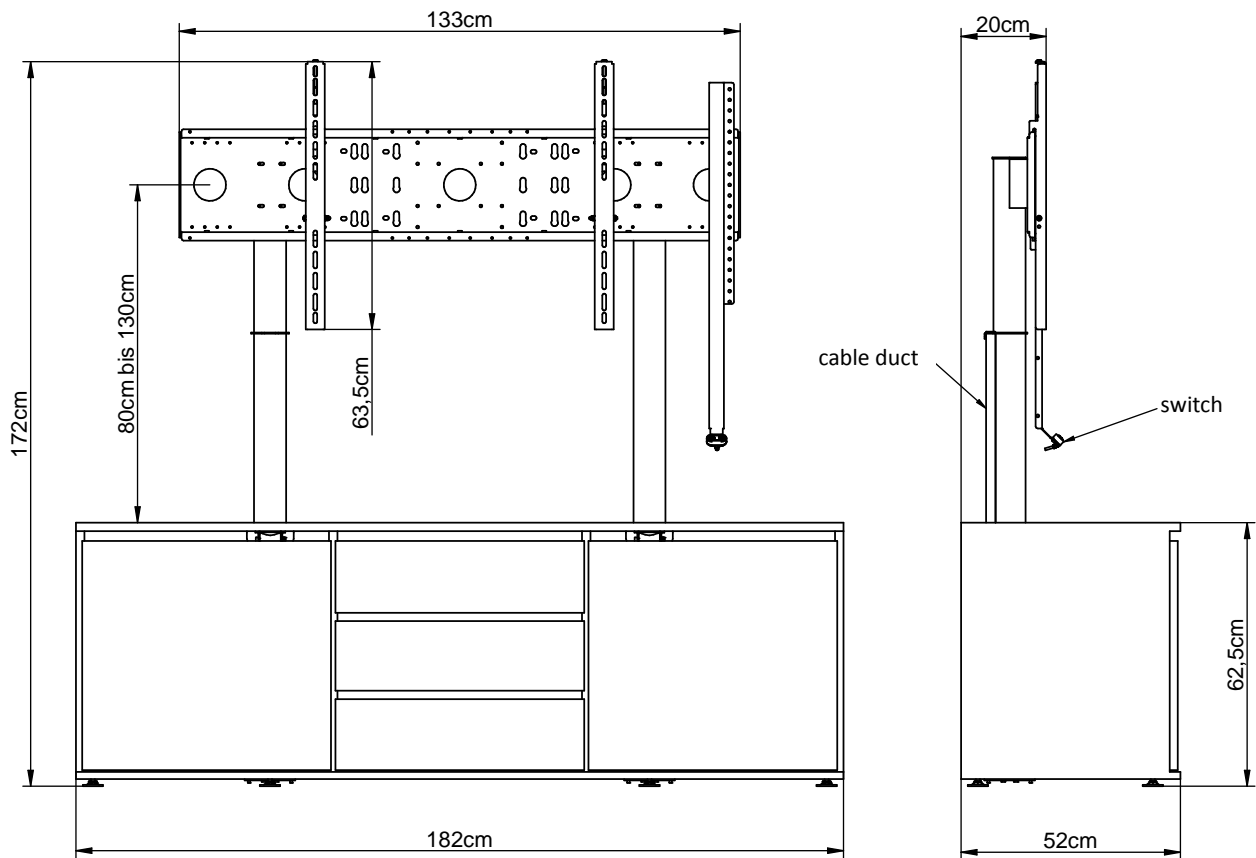
Equipment: VESA 100x100 – 1.250x600, cable channel for display connection behind the motorised lifting column, equipped with on / off switch, all Media Side selects are equipped with doors as standard, incl. shelf, optionally one lock per door, to secure the internal technology, cabinet module, each consisting of three drawers, camera shelves, castor rollers

Delivery: takes place in a built-up state

Media Side select triple

H 62,5 x W 182 x D 52 cm (with adjustable feet)

H 76,5 x W 182 x D 52 cm (with castor rollers)



Decores:

